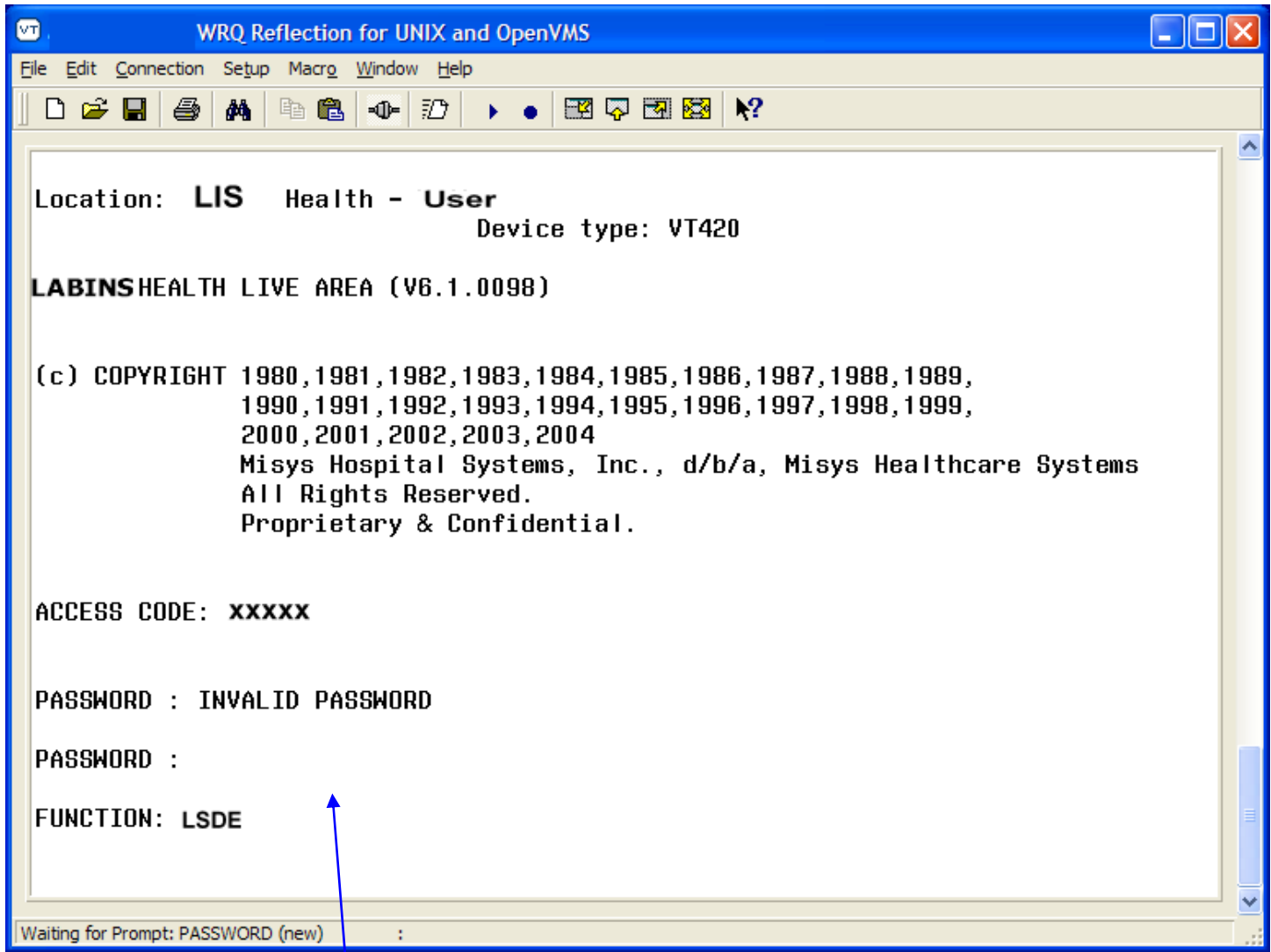


Program ^uutil main menu

The LSDE maintenance program allows the users to setup and monitor operational parameters for Misys Lab patient results, master file, and definition table dictionaries extractions process.

To access this menu enter function "LSDE" at the Misys function prompt. Users that are allowed to use this function are defined by the lab system manager via function SC (Security Maintenance).



Main Menu



Figure 1 Main Menu Screen

1. Enable/Disable Incremental Processor
Turns daily incremental processing on and off.
2. Start /Stop Full Extract
Starts and stops extraction of all results, master files, tables, and dictionaries from the Misys lab system.
3. Start/Stop Incremental Extract
Manual start or stop daily incremental extraction.
4. Set SQL Server
Sets server that receives extracted files (TEST, QA, Production).
5. Set Error Email Address
Assign email address where error notification will be sent.
6. Show Summary
Shows current parameter settings.
7. Monitor Incremental Extract
Monitors progress and status of incremental extract process.

Enable/Disable Incremental Processor:

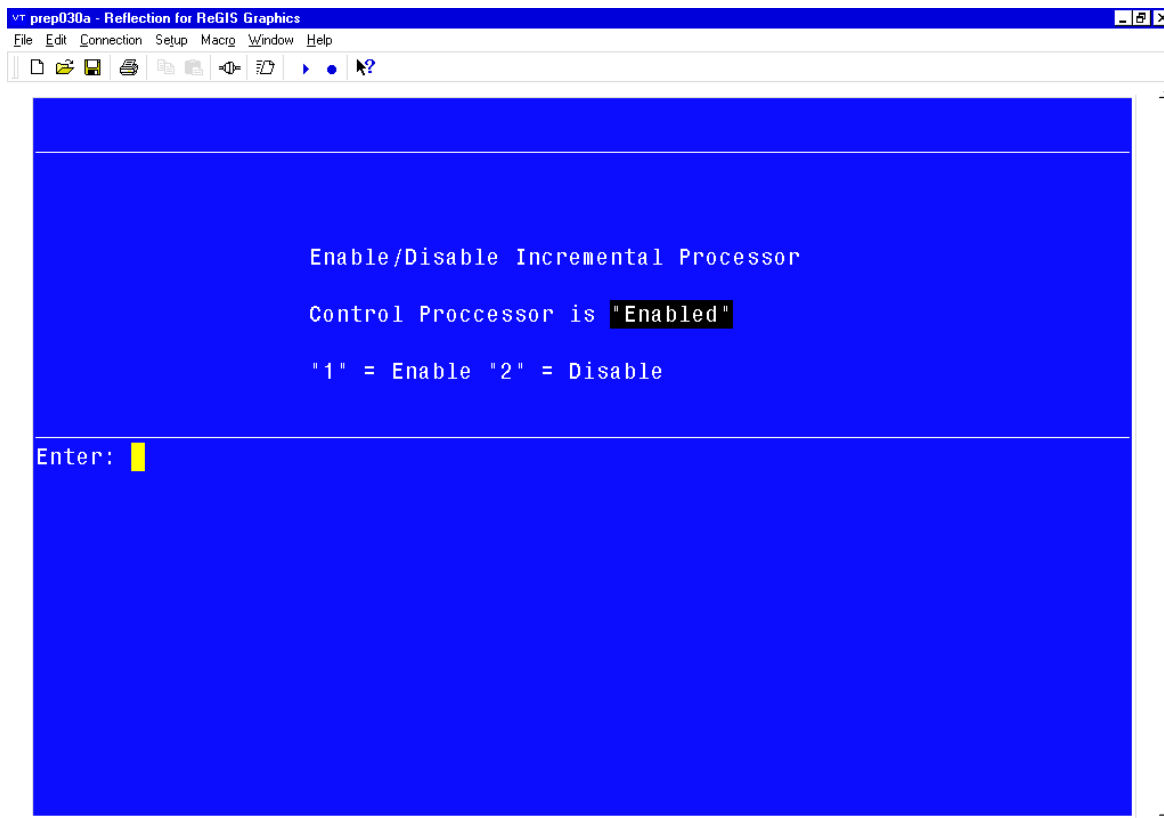


Figure 2 Main menu option 1

Option 1 provides the user with the ability to enable and disable the incremental processor. The "Enabled" status as seen in Figure 2, allows automatic daily incremental extractions. The "Disabled" status prevents the automatic daily incremental extraction process from executing.

The Incremental processor will continue to run daily until it is disabled. The process will remain disabled until the control processor status is set to "Enabled" (by entering a "1").

An email is sent to all personnel listed on the email list whenever the daily incremental process has been disabled (see option 5 on the main menu for the list on personnel).

Start/Stop Full Extract:

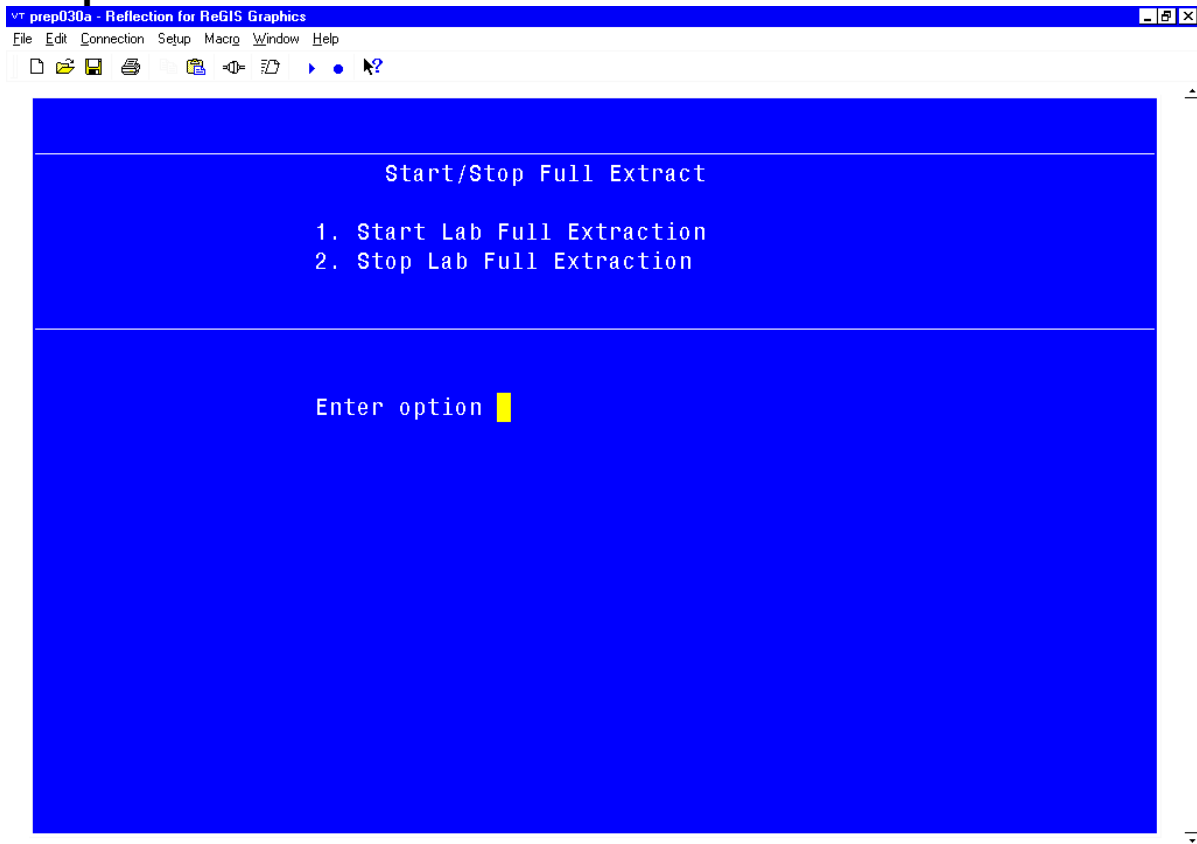


Figure 3 Start/Stop Full Extract Screen

Selecting Main menu option 2 displays the screen shown in figure 3. This screen provides the user with the ability to start or stop a full extraction of lab data. The user must select option "1" to start a full extraction. The user must select option "2" to stop an extraction that is currently running.

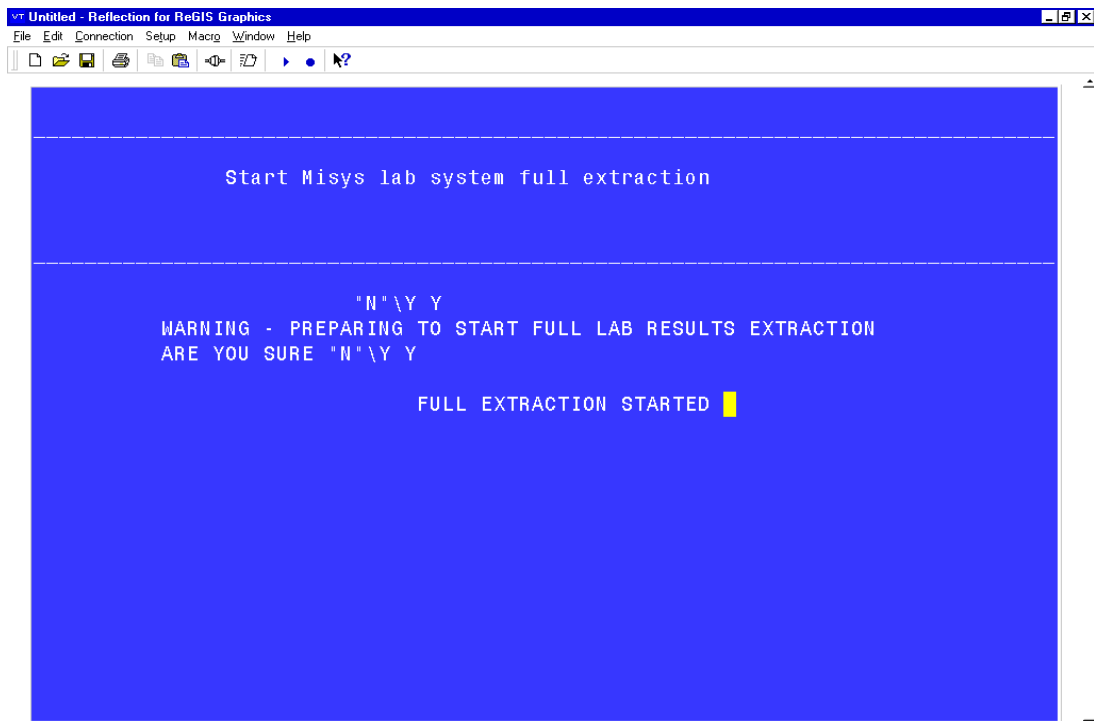


Figure 4 menu options 2,1 Start Full Extract

To start a full extraction the user must select option "1" (figure 3). The default is no "N" and is aborted (see figure 5) if the user doesn't enter a "Y". If the user enters "Y" at the first prompt, a second prompt will appear to confirm that the user would like to start the extraction process. Once again, the default is no "N" and the user must answer with "Y" to start the process.

An email is sent to all personnel listed on the email list whenever a full extract is started.

NOTE: The daily incremental extraction process should be disabled while running a full extraction to prevent overwriting the full extraction data.

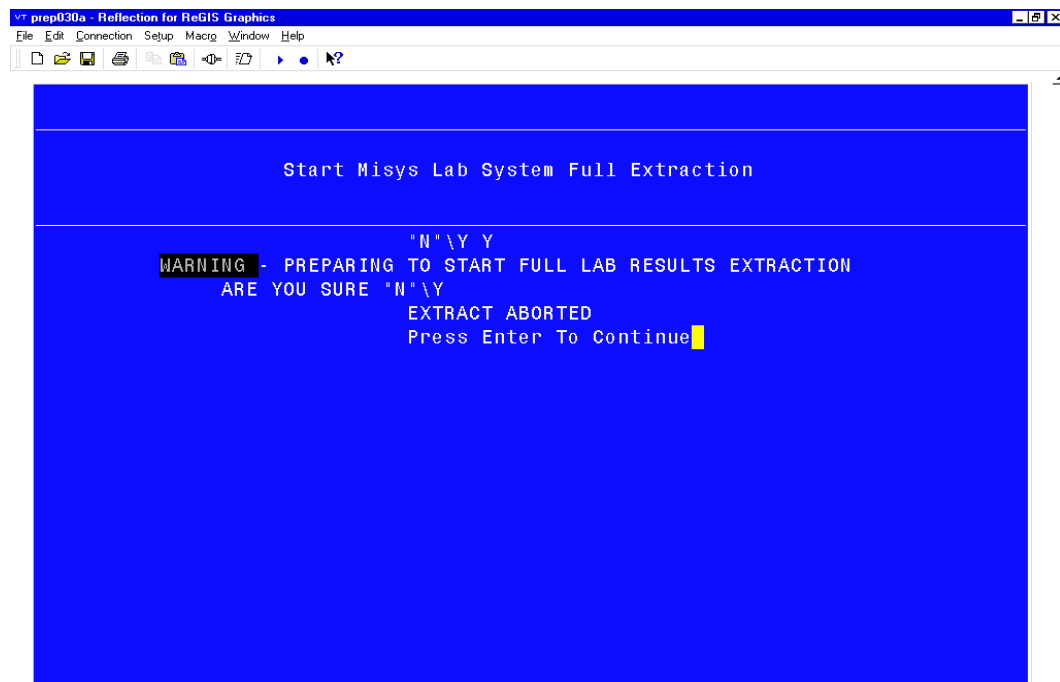


Figure 5 Extract Aborted

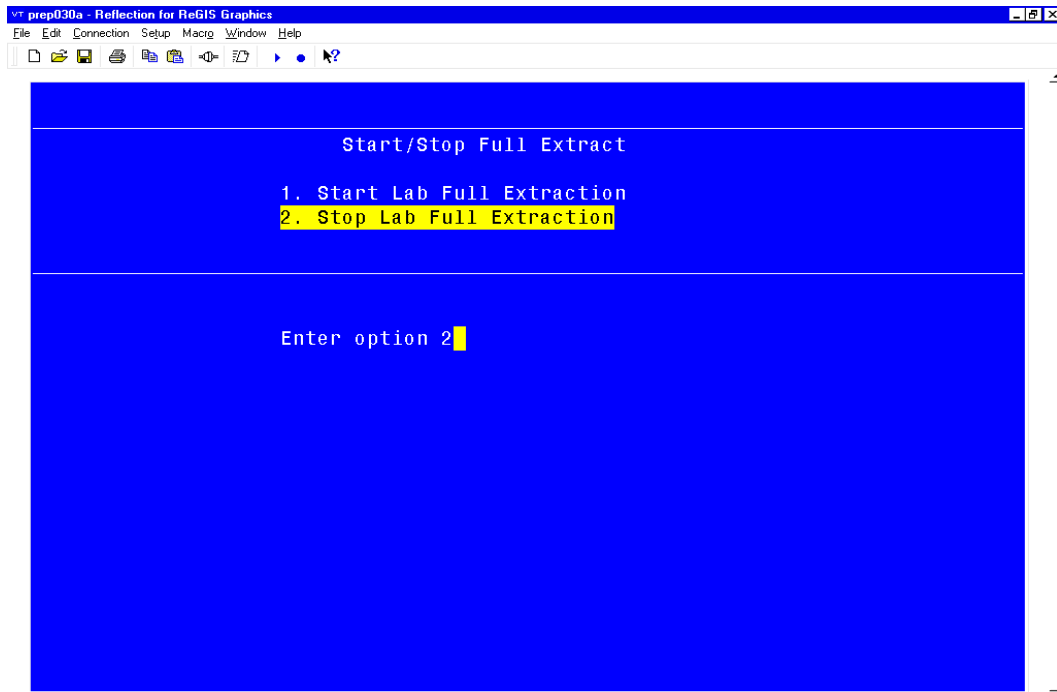


Figure 6 Main menu options 2,2 Stop Full Extract

Full extractions may take up to 24 hours to run. If the full extraction process must be stopped the user must select Menu option 2 (Figure 6).

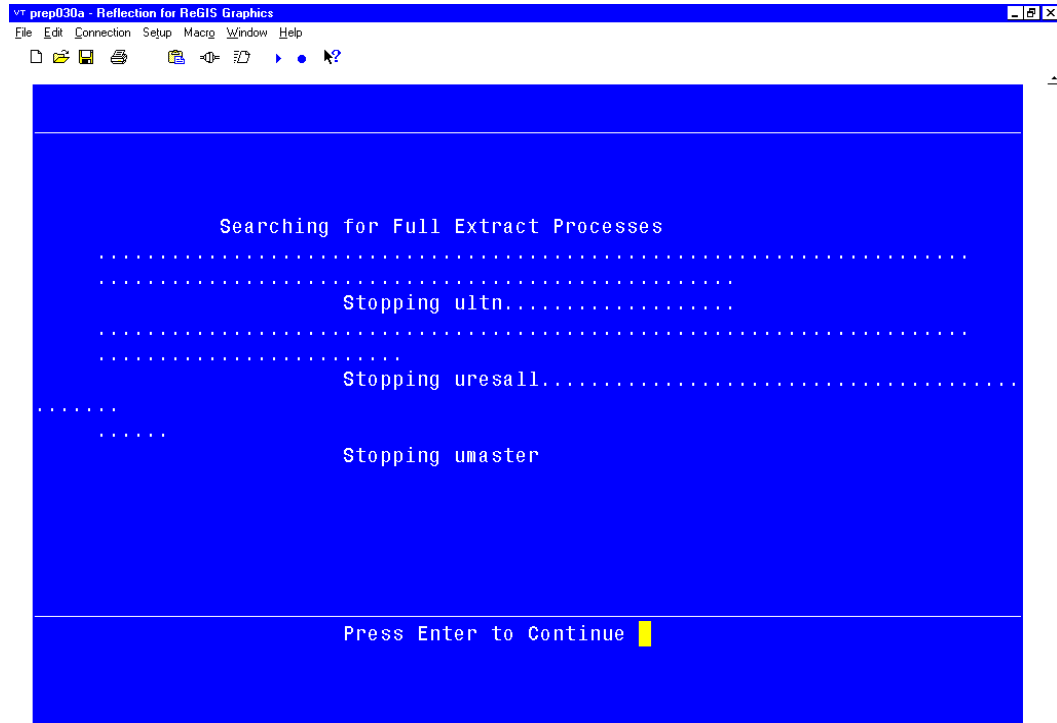


Figure 7 Extract Processes Being Stopped

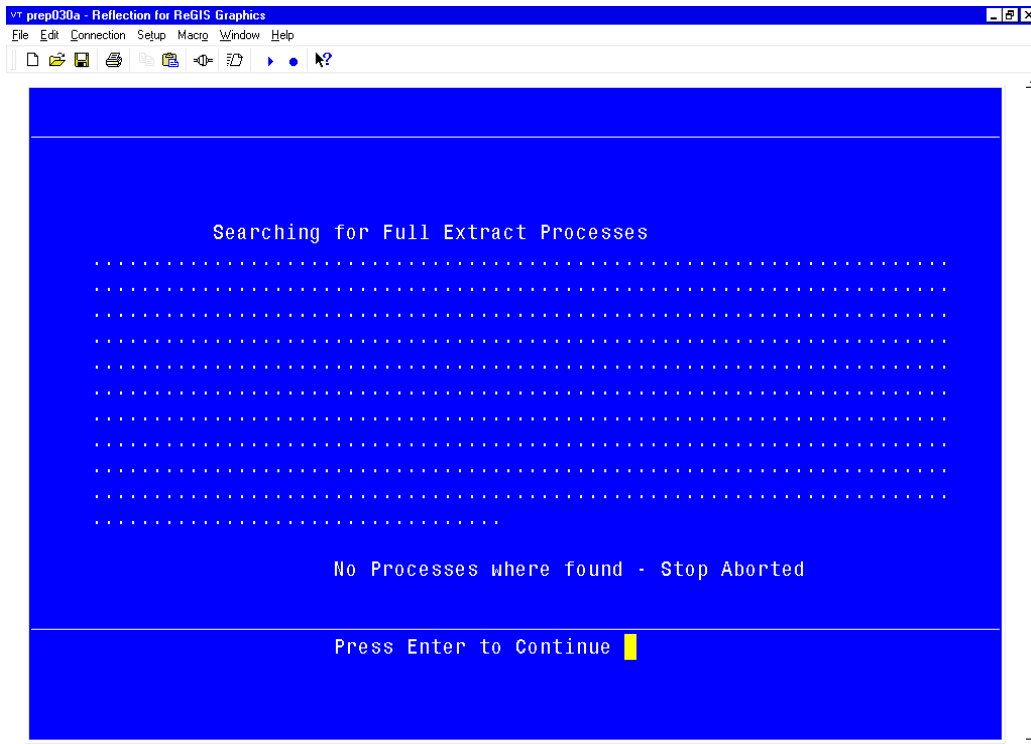


Figure 8 Full Extractor Not Running

Figure 7 shows three processes have been stopped – **ultn** control processor, **uresall** patient results file extractor, and **umaster** master file extractor.

NOTE: If full extract has completed, was not started, or no processes are found, the stop process is aborted. (See Figure 8)

Start/Stop Incremental Extract:

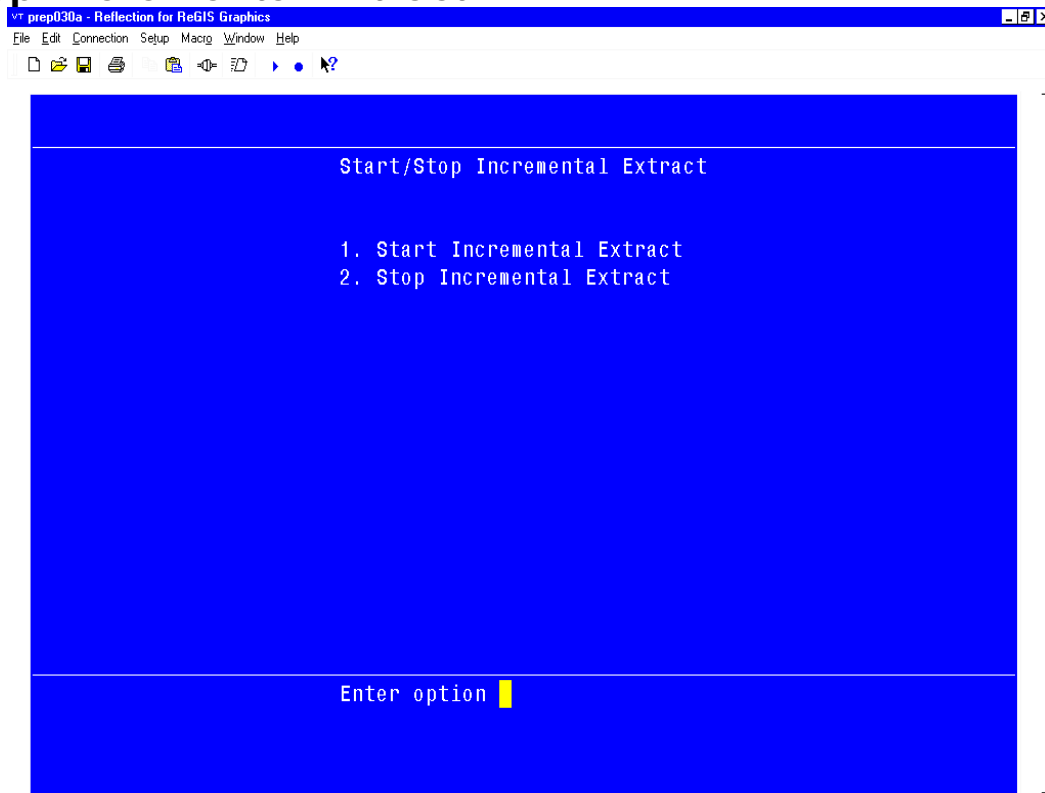


Figure 9 Main Menu Option 3

Daily incremental extractions can be started and stopped using Option 3 from the main menu.

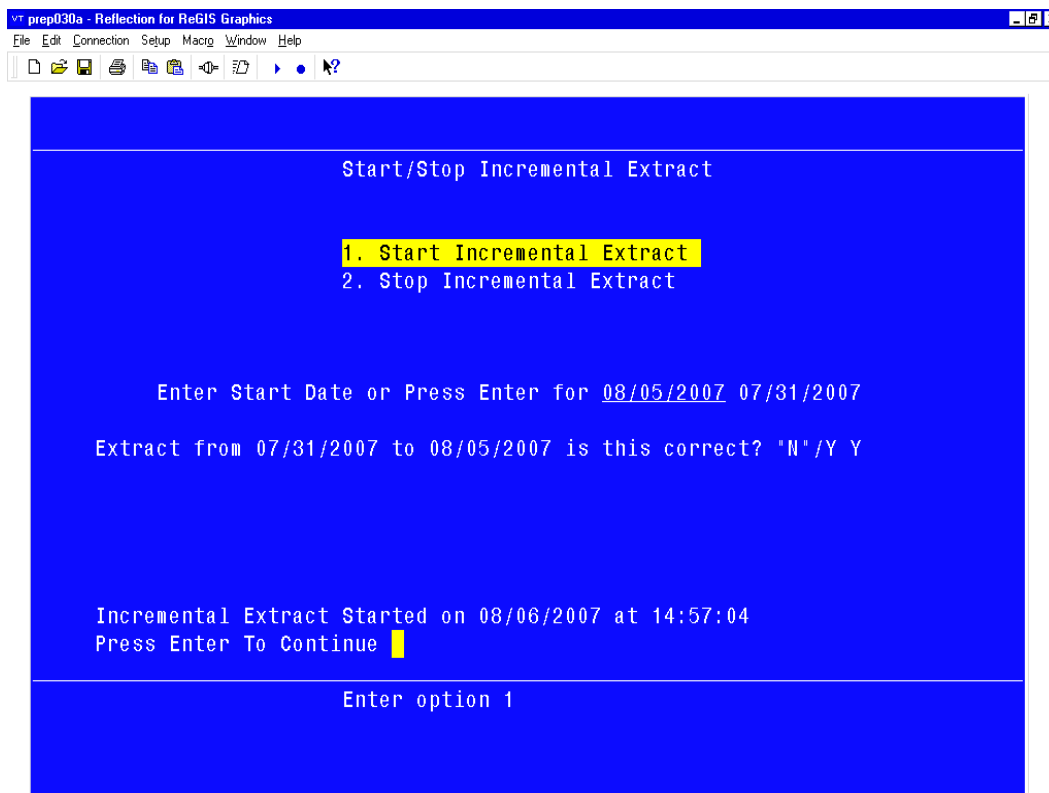


Figure 10 Main Menu Option 3,1

To start an incremental extract, the user must enter the incremental extraction begin date. The default date is always one day less than the current date (e.g. current date is 08/06/2007 so the default would be 08/05/2007).

Note: If the user presses enter without entering a date, the extraction begins using the default date.

For example: When the date 07/31/2007 is entered (figure 10), the user will be prompted to verify the extraction dates. Answering with a "Y" will began the extraction, default is "N".

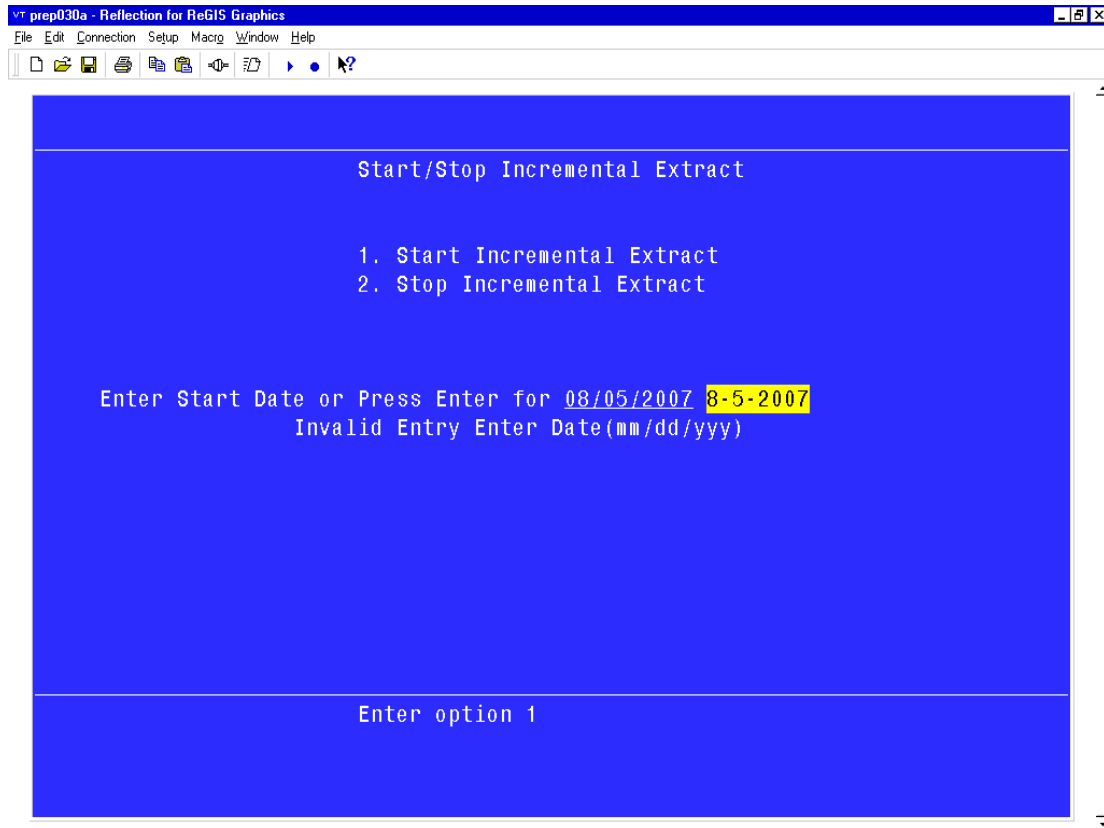


Figure 11 Incorrect date format

When entering a date, the user must enter the date in the following format: mm/dd/yyyy (translation: mm= month dd= day yyyy= year). If the date is entered in any other format, the screen will display a data entry error message (Figure 11). The user will be required to reenter the date in the appropriate format.

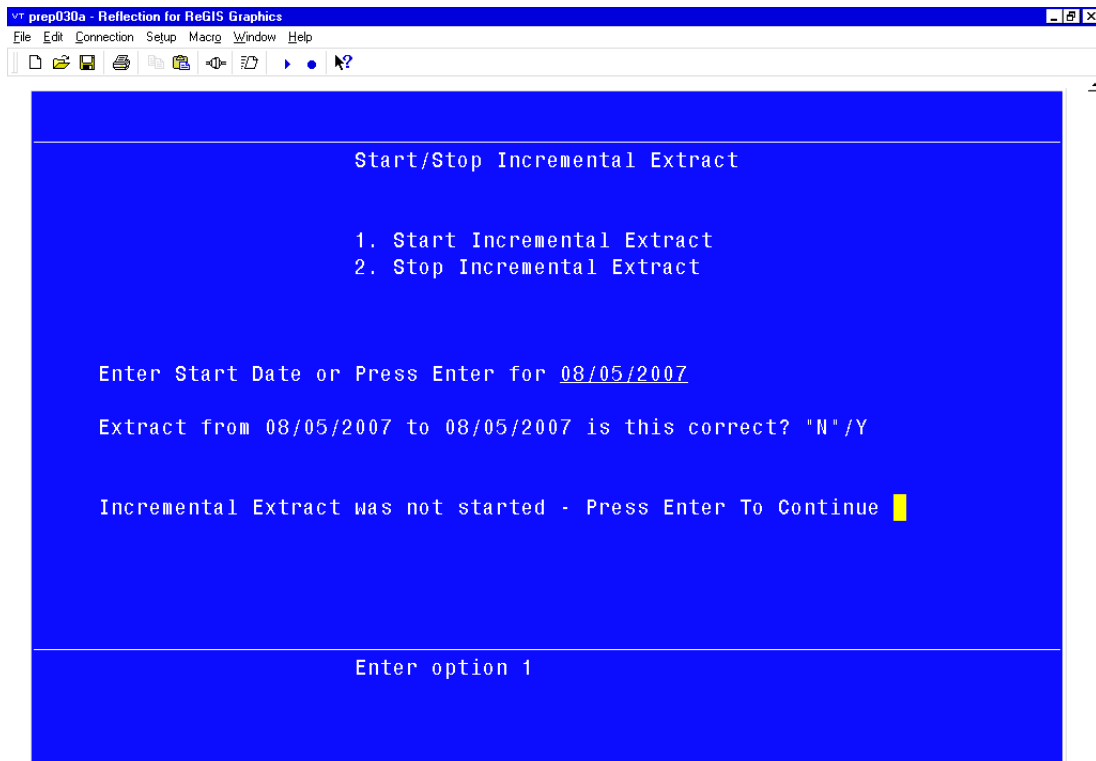


Figure 12 Extract Aborted

A second prompt will appear to confirm that the user would like to start the extraction process for the specified time period. Once again, the default is no "N" and the user must answer with "Y" to start the incremental extraction process. If anything other than a "Y" is entered, the extraction is aborted.

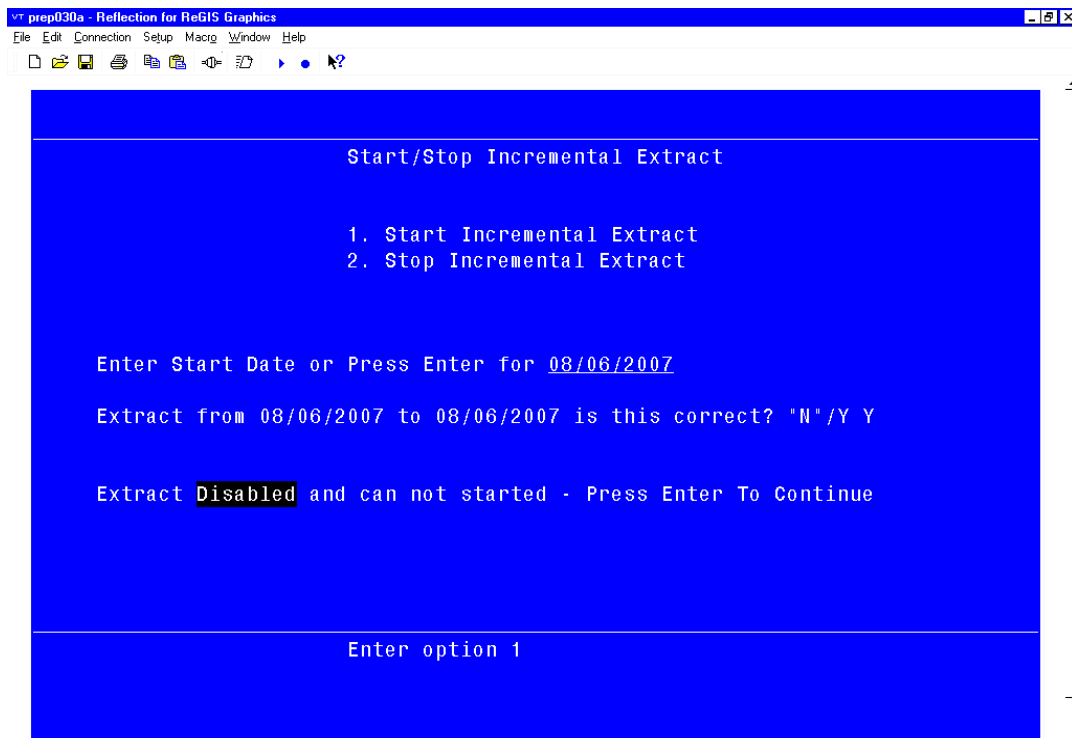


Figure 13 Incremental Disabled via option 1,2

Note: Incremental Extractions must be enabled in order to start an incremental extract. See Main Menu Option 1.

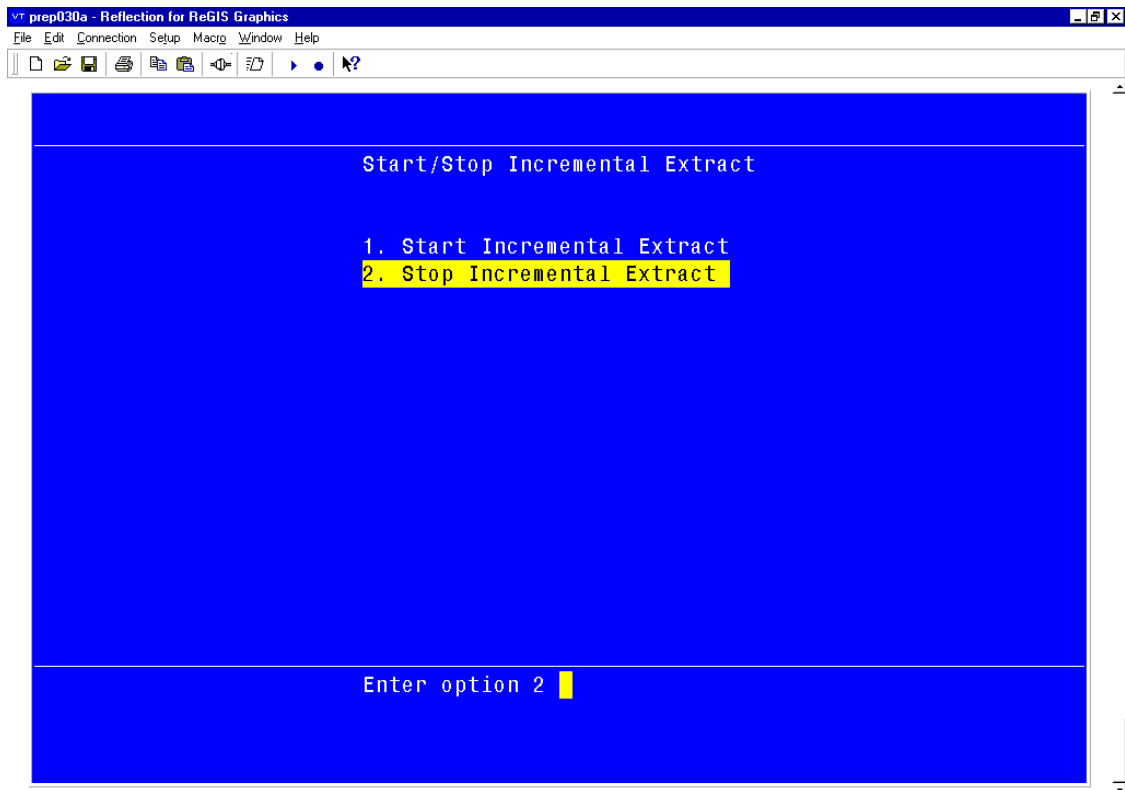


Figure 14 Main Menu Option 3,2 Stop Incremental Process

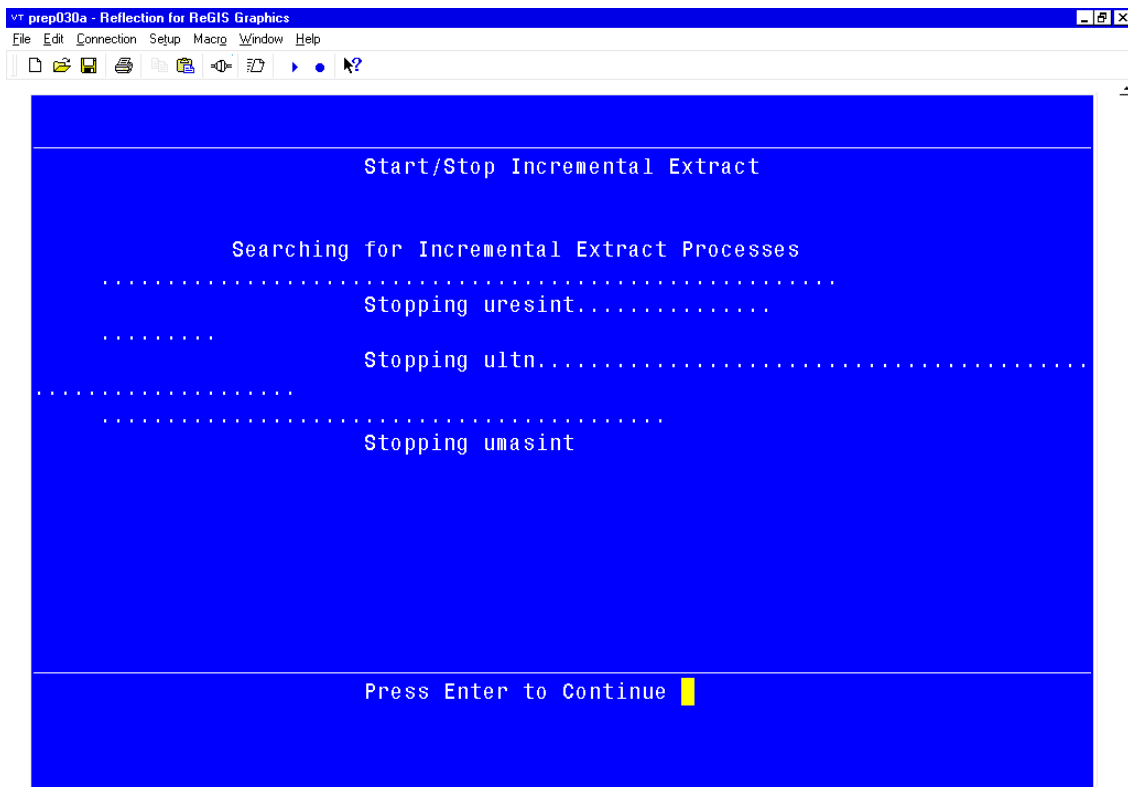


Figure 15 Incremental Processes Stop

Figure 15 shows three processes have been stopped – patient results file extractor, **uresint**, control processor **ultn** and **umasint** master file extractor.

Note: If the extraction has completed, was not started, or no processes were found, the stop process is aborted (figure 16).

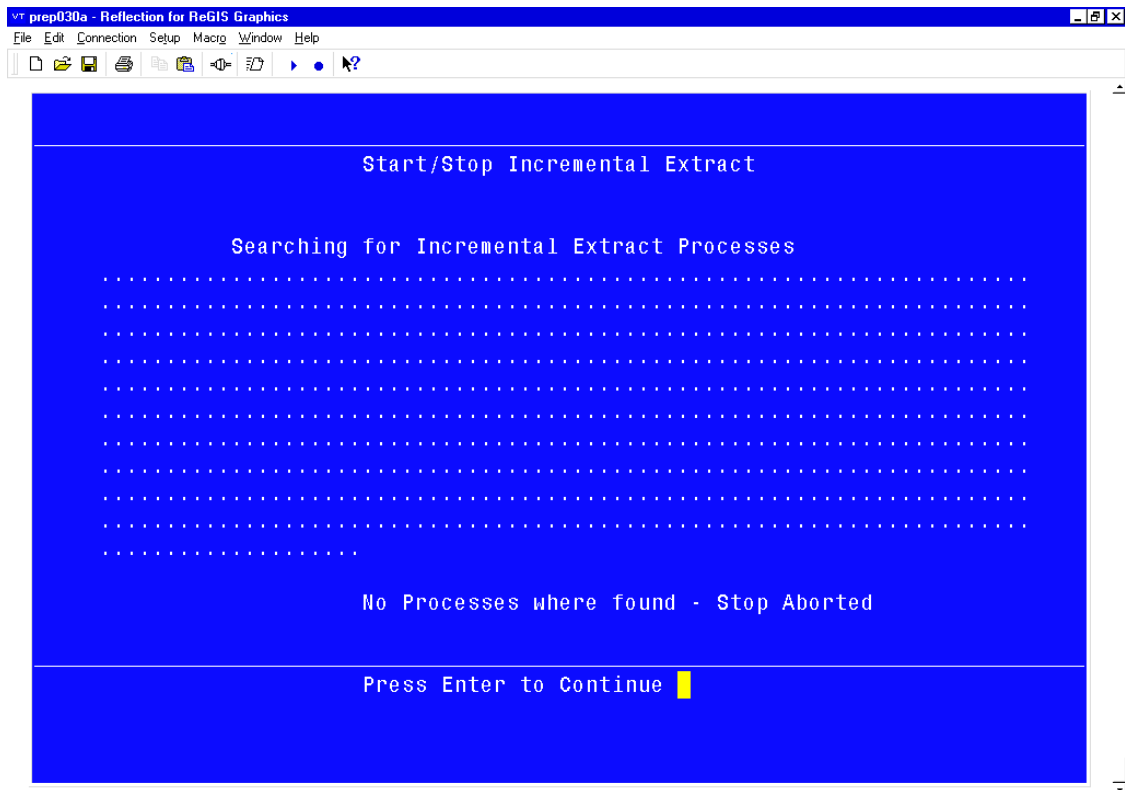


Figure 16 Stop Aborted

Set SQL Server that will receive the Extract Files:

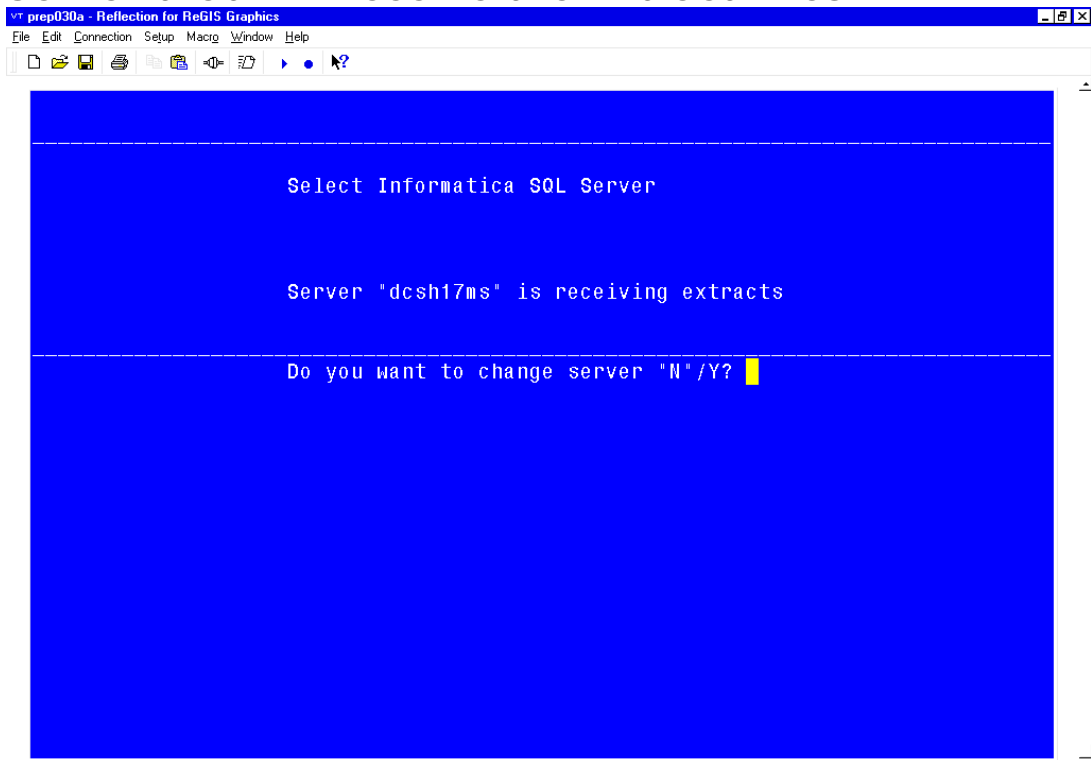


Figure 17 Main menu option 4

Main menu option 3 sets the SQL server that will receive the extracted data files from the lab system. The screen will display the current server or the word "NONE" if no server has been defined. (Figure 17& 18)

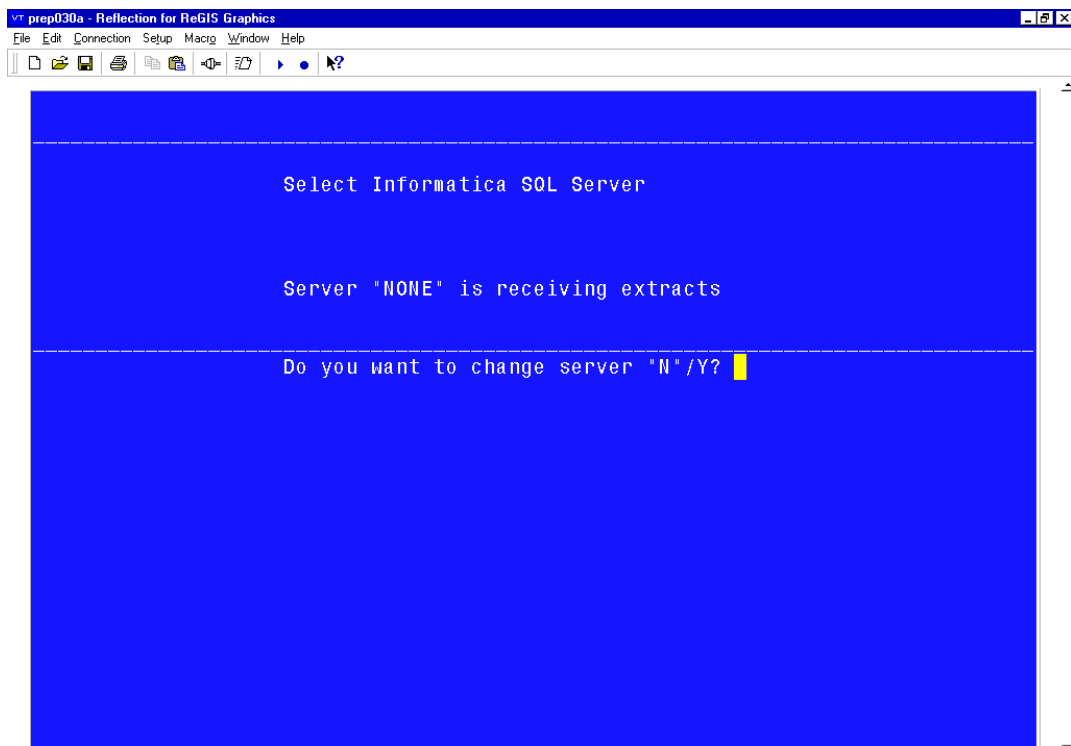


Figure 18 No server has been defined

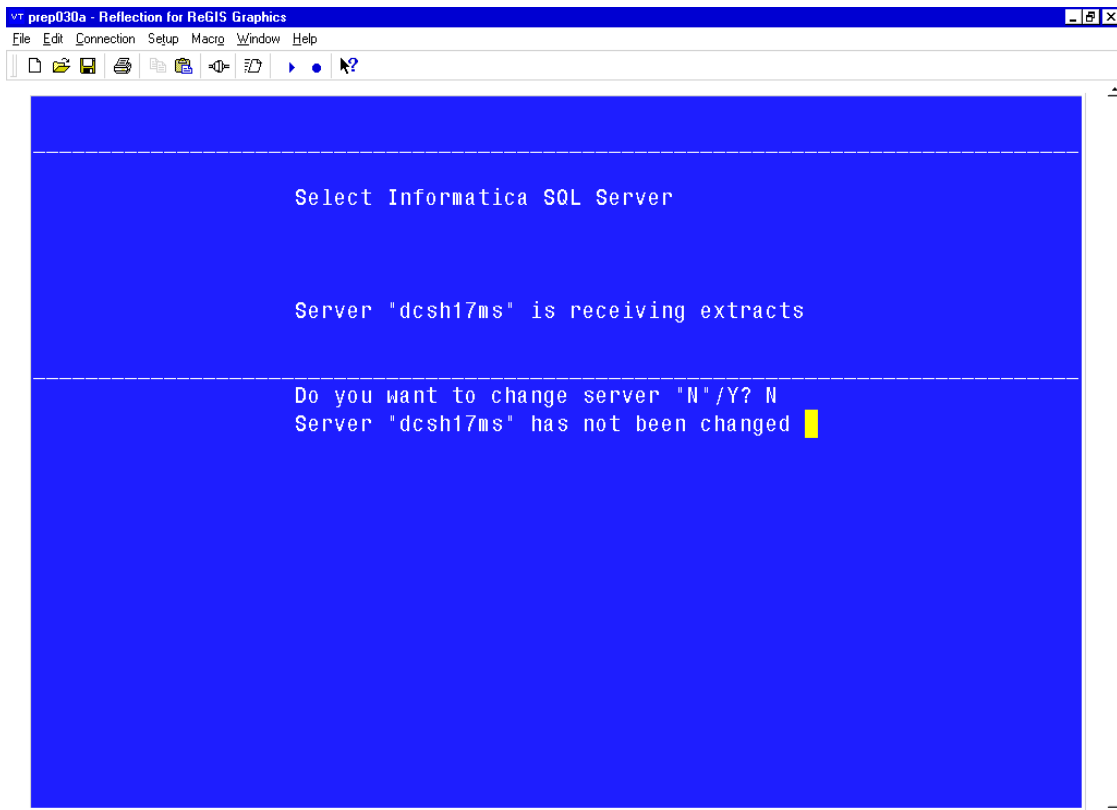


Figure 19 No server was selected

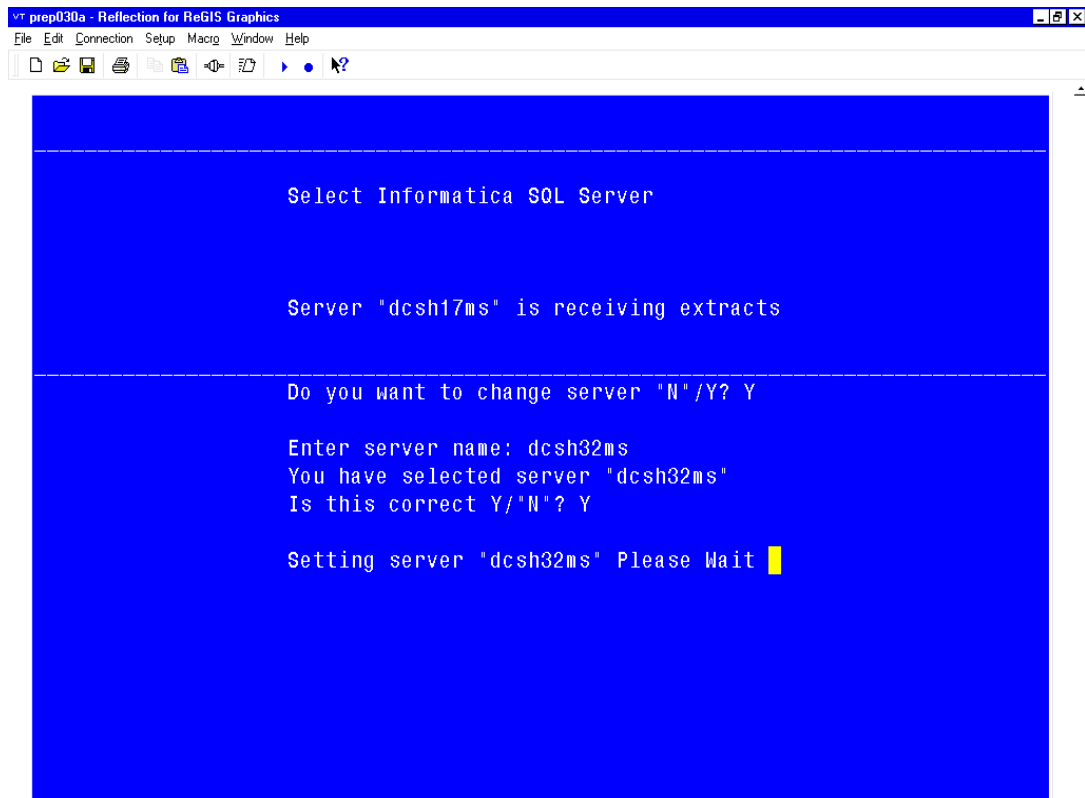


Figure 20 server dcsh32ms set to receive extracts

An email is sent to all personnel listed on the email list whenever the server is updated.

Set Error Email Addresses:

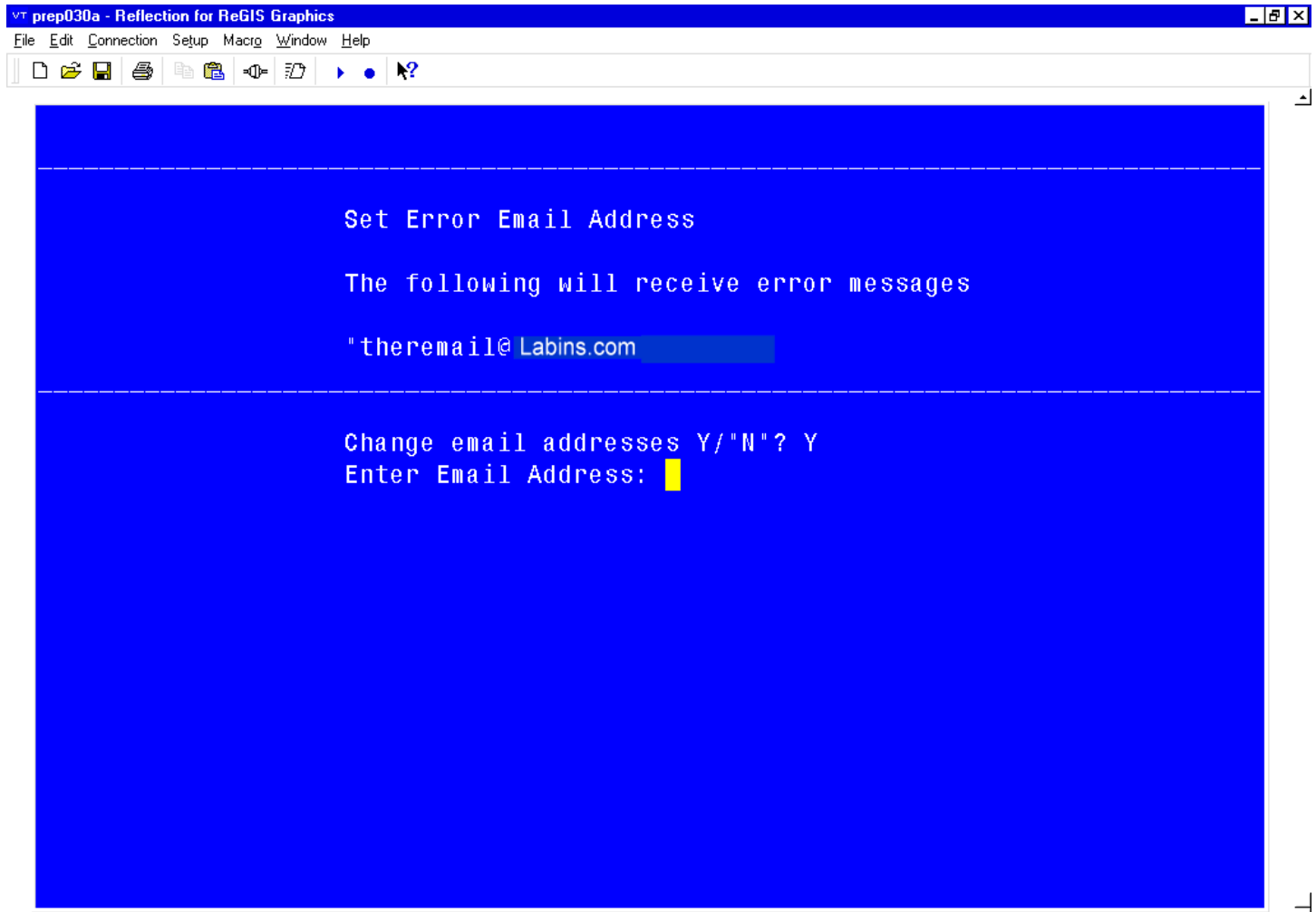


Figure 21 Option 5 Email setting

The screen displays the current email address(es) receiving all email notification. The user must enter "Y" to add/delete/modify email addresses.

Users defined in this email list are sent emails if any of the following conditions occur:

1. Program errors out - email is send with the program name and what caused the problem.
2. Files fail to delete off the SQL sever or the lab system.
3. Program(s) fail to start or complete.
4. Files fail to FTP to SQL servers.
5. Unable to verify server received all FTP files.
6. Missing control or information files on lab system or SQL servers.
7. Critical changes made using the function "LSDE" (manual start/stop of extracts, disabling daily extract, changing destination server, etc.)

Note: Email notifications are not driven by any particular error or process messages. All errors and messages are sent to all email addresses listed on this screen.

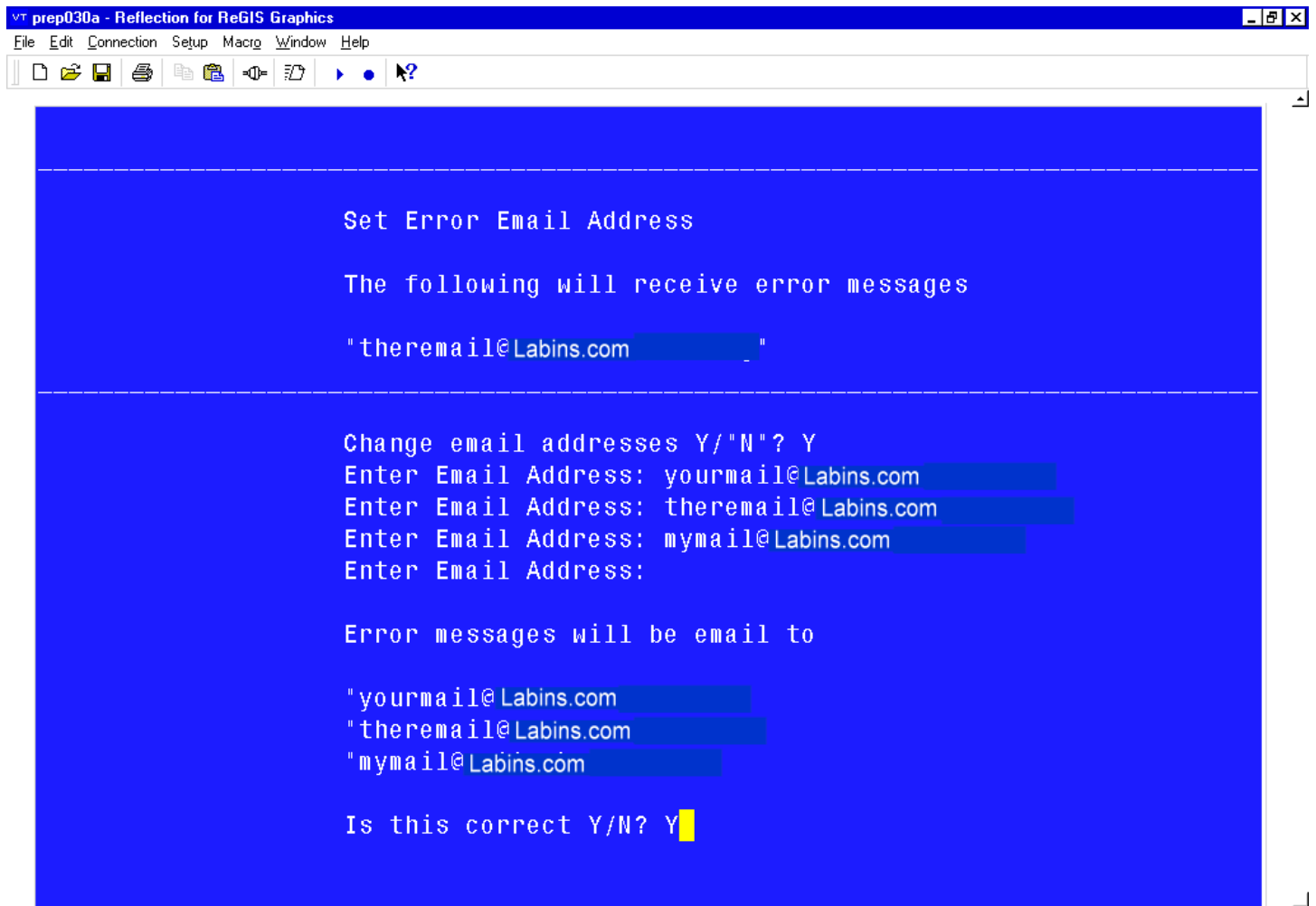


Figure 22

Enter email addresses, press enter when done and accept by entering "Y"

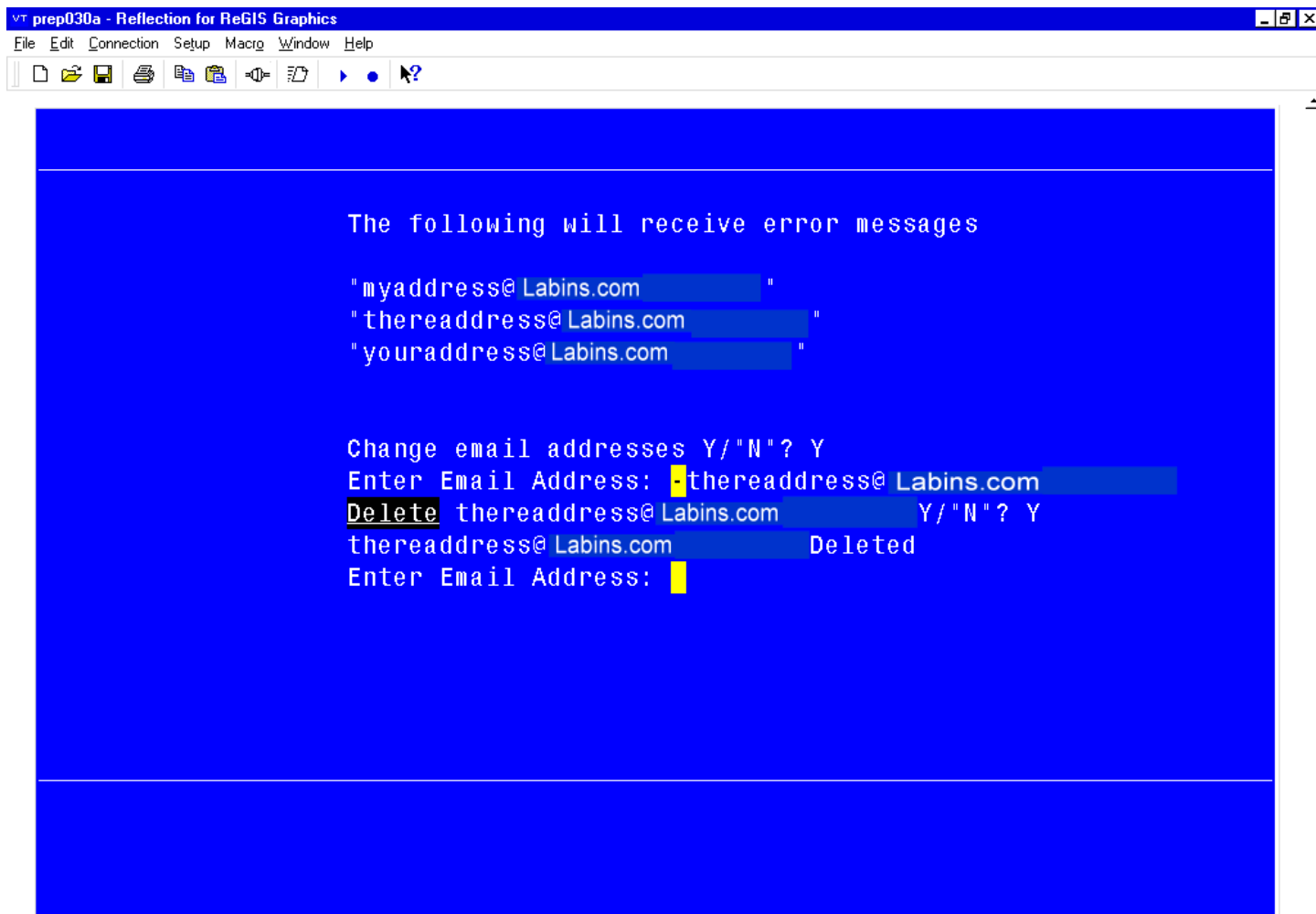


Figure 23 Delete Email Address

Placing an "-" in front of the email address will delete the address from the list.

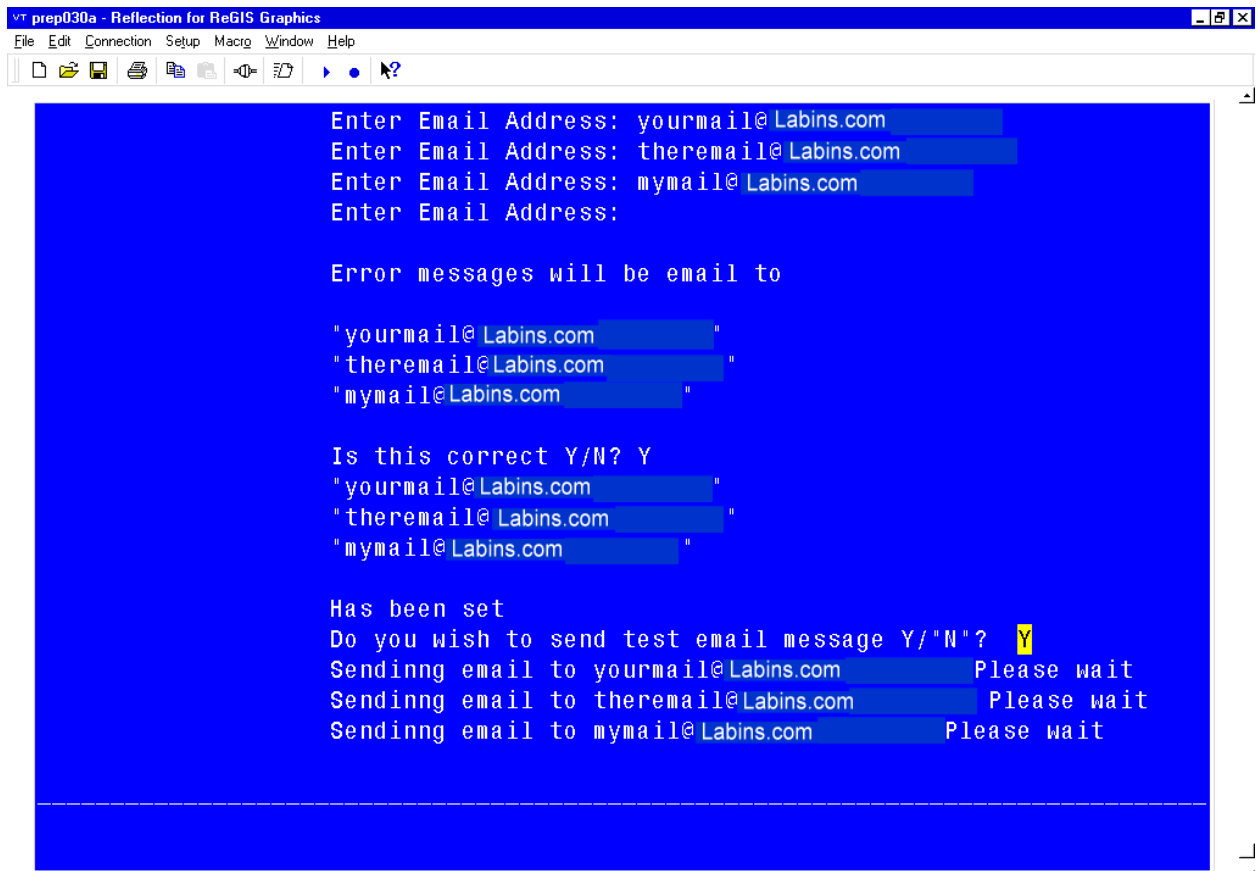


Figure 24 sending email

If you wish to verify that users will receive email messages enter "Y" at the send email prompt, the following message is sent to all users on this list.

Subject: LSDE error Test message

This is a error reporting test message for
the Misys Clinical lab extract program

If you have received this message in error contact
Helpdesk or Labins at support@labins.com

Show Summary:



Figure 25 Main menu option 6 Current configuration and statuses

Monitor Incremental Extract:

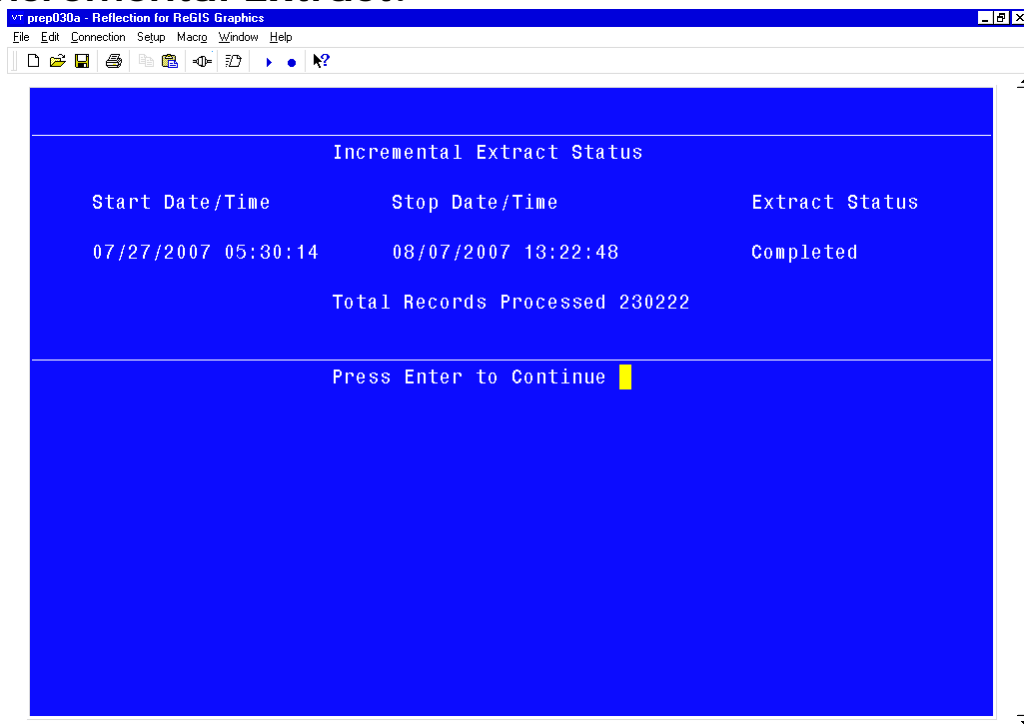


Figure 26 Main menu option 7

Figure 26 displays date and time incremental extract completed, and total number of patients extracted.

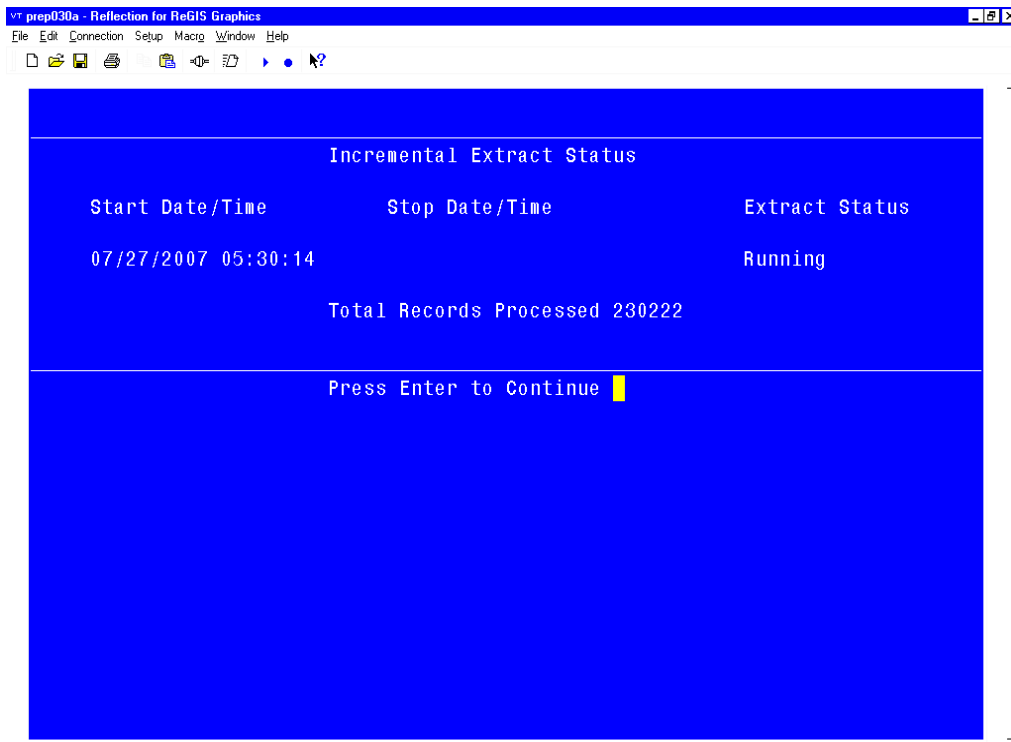


Figure 27

Note: If the incremental extract is running, total records are displayed and updated every 3 seconds until the screen is exited by pressing enter.